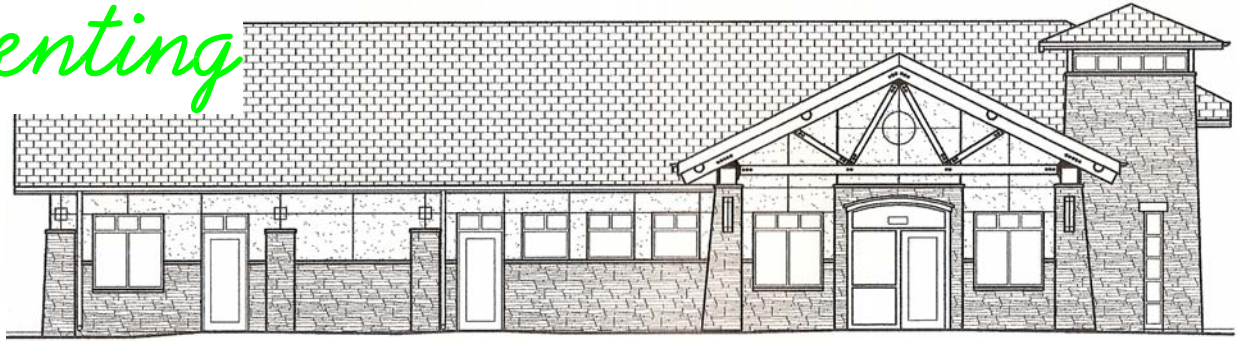


*Presenting*



209 NW Blue Parkway • Lee's Summit, MO • (816) 525-7373

## **JOHN C. FLUCKE, DDS P.C. NEW DENTAL OFFICE & MEETING VENUE**

Dr. John Flucke is excited to announce the opening of his new state-of-the-art dental office. The office includes a training classroom which is available to organizations as a venue for classes, conferences, presentations, and sales meetings. Perfect for implementing your marketing plans!

### **LOCATION**

The office is located in Lee's Summit, Missouri, a major suburb of Kansas City. The office is conveniently located within a 30 - 60 minute drive from other parts of the Kansas City metropolitan area, including Kansas City International Airport. Hotel accommodations are available nearby.

### **AVAILABILITY**

The space is primarily available on Fridays and Saturdays, as well as in the evening during the week. Call for other needs.

### **MEETING ROOM DESCRIPTION & CAPACITY**

The meeting room is 400 square feet and has a separate exterior entrance for attendees. Accommodations can be made for up to 15 persons in a classroom setting. Restrooms, as well as a computer overhead projector and screen are available.

### **OPERATORIES ADJACENT TO THE CLASSROOM**

Dr. Flucke's state of the art clinic is steps away from the meeting room. This allows vendors to demonstrate the use of their products in a clinical, hands-on setting.

### **SPEAKER AVAILABLE**

Dr. Flucke is available as a speaker for any of your meeting needs. However, if you would like to use the space for a meeting, it is not required that you have Dr. Flucke as a speaker.

### **FOOD & REFRESHMENTS**

A galley is conveniently located off of the classroom for coffee and refreshments. Based upon your individual needs, we are able to either cater food in for you, provide catering suggestions for you to organize, or suggest local eating establishments.

### **CONTACT US**

Please contact Peggy at (816) 525-7373 for more information.